

## 3 WAY CONTROL VALVE

Automation  
Simplified...



Solenoid Valve

Angle Seat Valve

Rotary Coupling

Pneumatic Directional Control Valve

Actuator

Cylinder

One Touch Fitting

Ball Valve

Butterfly Valve



**Specifications**

|                     |   |
|---------------------|---|
| Port :              | Refer below technical data sheet (Available BSP / NPT)  |
| End Connection :    | Screw End   |
| Body Material :     | SS ASTM A351 Grade CF8  |
| Seal :              | PTFE / VITON  |
| Circumstance Temp : | -10°C to 70°C   |
| Media Temp :        | -10°C to 180°C  |
| Media :             | Steam, Air, Water, Chemical, Gases, Oil, Diesel, Hot Water  |
| Leakage :           | As per ANSI B16.104 - 1976 Teflon seating class IV.<br>For other soft seating class VI Drop Tight/Bubble Tight. |
| Stem Packing :      | Self adjusting, Spring loaded Teflon packing.   |
| Air Quality :       | Lubricated /Non-lubricated.   |

**Actuator (Spring Return) Type**

|                        |  |
|------------------------|--|
| Cover :                | CF8  |
| Plate :                | CF8  |
| Working Pressure :     | 4.5 to 7 bar air (Not Recommended actuator for pneumatic pressure above 7 bar) |
| Seal Material :        | NBR / VITON  |
| Life :                 | 1 million cycle  |
| Other Technical Data : | Available on Request   |

**Mixing**

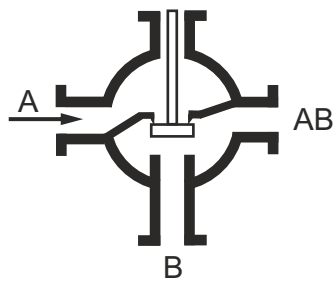
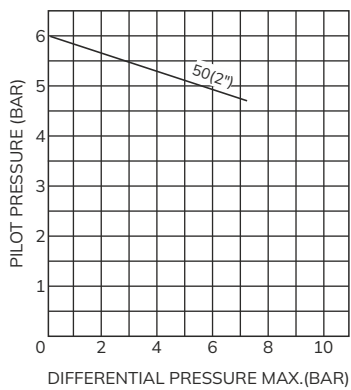
Valves can be used for introducing two different fluids (mixing) through two different ports to common port 'AB'.

**Diverting**

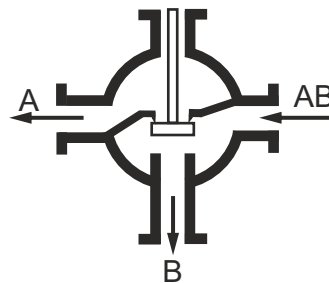
One fluid coming through port 'AB' can be diverted to 'A' port or 'B' port.

**Operation**

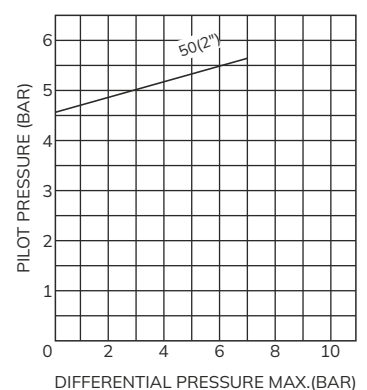
In normal condition, 'A' port is closed and 'AB' port is connected to 'B' or 'B' port is connected to 'AB' port. On receiving pilot pressure, 'A' port is connected to 'AB' or 'AB' port is connected to 'A' closing port B.



Pressure at Port 'A',  
AB Connected 'B' 'A' is Close.



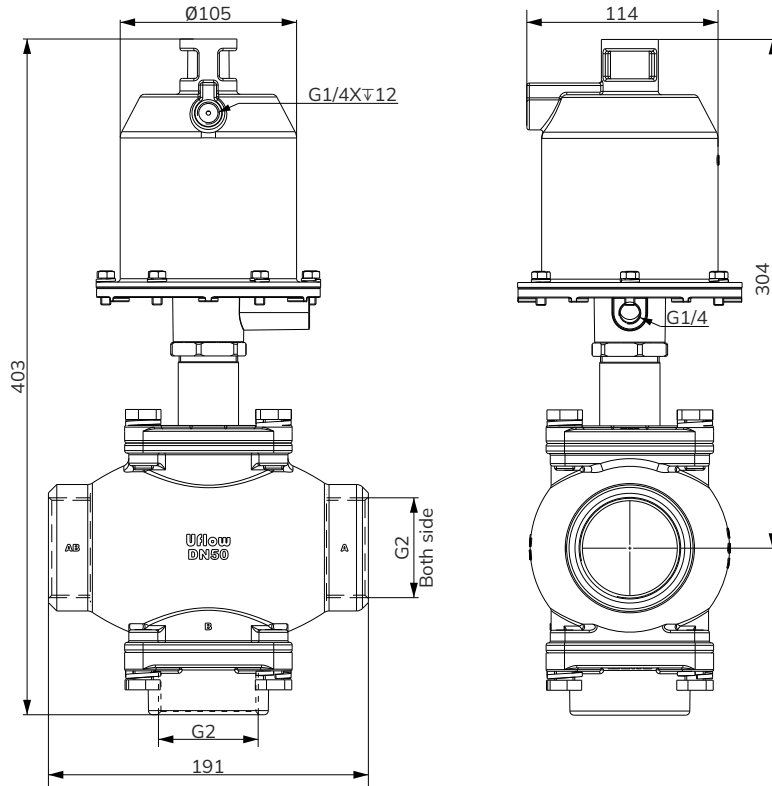
Diverting - Pressure at 'AB'  
Connected to 'B' 'A' Port is Close.



Technical Data

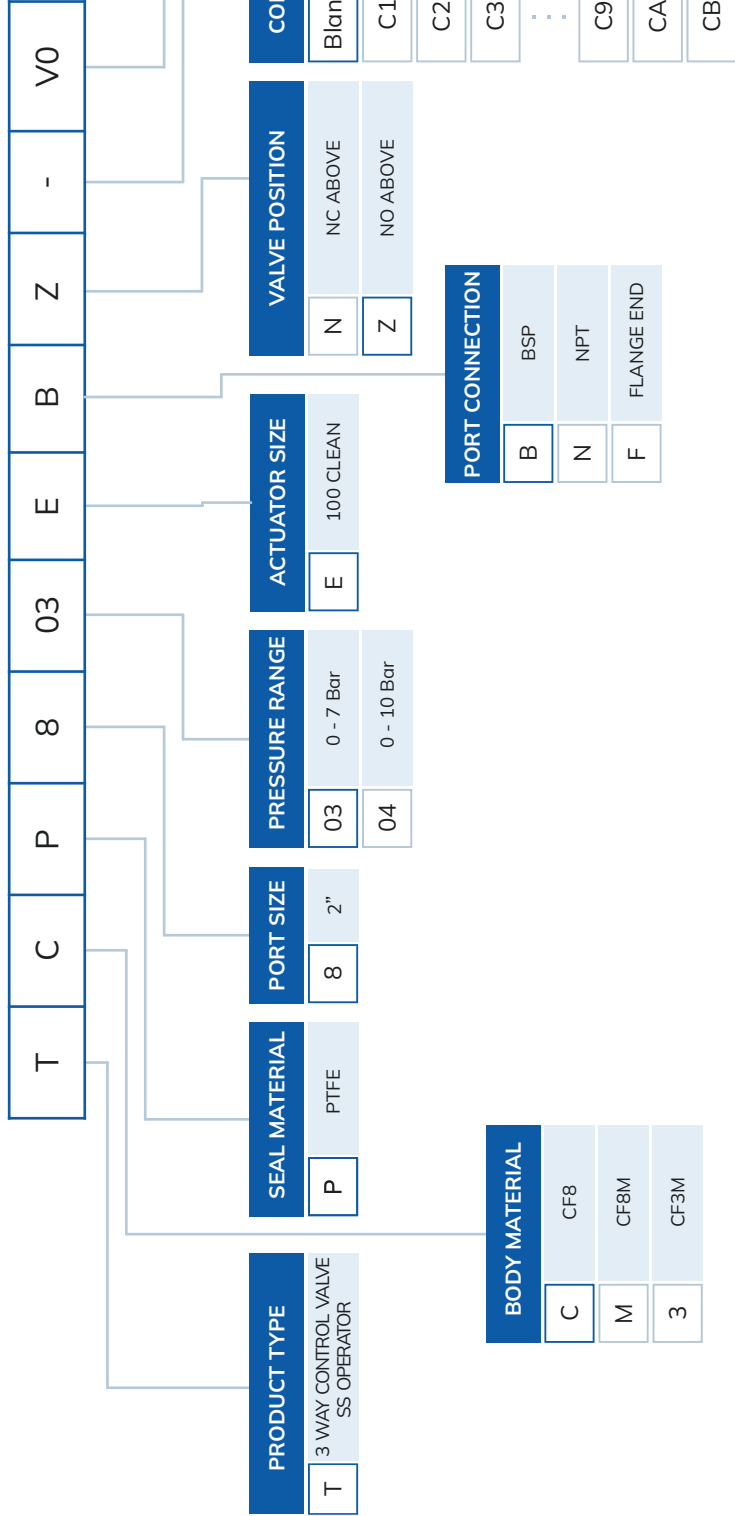
| Model No.   | Body Material | Pipe (Inch) | Orifice (mm) | Min. Operating Pressure Kg/cm <sup>2</sup> | Max. Operating Pressure Kg/cm <sup>2</sup> | Seal & 'O' Ring Material | Flow Factor Kv m <sup>3</sup> / hr |
|-------------|---------------|-------------|--------------|--|--|--------------------------|------------------------------------|
| TCP803EBZV0 | CF8           | 2"          | 45           | 0  | 7  | PTFE                     | 35                                 |

Dimension (All dimensions in mm)



\* All dimensions are approx

# 3 WAY CONTROL VALVE WITH STEEL ACTUATOR OPERATED MODEL IDENTIFICATION CHART



## TCP803EBZV0

2" 3 WAY CONTROL VALVE CF8-PTFE-0 TO 7 Bar-100 CLEAN-BSP-NO ABOVE


# Global Presence...




Made In India



## CONTACT US:

 [sales@uflowvalve.com](mailto:sales@uflowvalve.com)  +91 851 109 8822  [www.uflowvalve.com](http://www.uflowvalve.com)

 Uflow Automation, Ankur Industrial Complex, Survey No: 275/276, Plot No: 31, Nr. Intol Cast Pvt. Ltd. Shapar(Veraval) Dist.: Gujarat (India) - 360 024.