

Automation
Simplified...



- Solenoid Valve
- Angle Seat Valve
- Rotary Coupling
- Pneumatic Directional Control Valve
- Actuator
- Cylinder
- One Touch Fitting
- Ball Valve
- Butterfly Valve

Country of Origin - INDIA



Specifications

Media :	Air
Max. operating pressure :	10 Bar
Ambient temperature :	-10°C to +60°C
Threaded connection :	Male : R - Taper thread, Female : G - Parallel thread
Media temperature :	+5°C to +50°C
Applicable tube material :	Nylon, Polyurethane
Applicable tube size (OD) :	Ø4, Ø6, Ø8, Ø10, Ø12, Ø14, Ø16
Recommended tolerance for tube OD :	±0.1 mm
Recommended minimum wall thickness of tubes :	

Nylon		PU	
Tube OD (mm)	Thickness (mm)	Tube OD (mm)	Thickness (mm)
Ø4	1	Ø4	1
Ø6		Ø6	1
Ø8		Ø8	1.5
Ø10		Ø10	1.5
Ø12		Ø12	2
Ø14		Ø14	2
		Ø16	2.5

Features

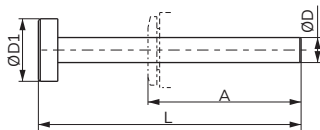
- ✓ Compact & Captivating Design
- ✓ All Threaded nipples has plastic portion that is capable of rotating 360°
- ✓ Full bore piping enables smooth flow of fluids.
- ✓ New Design SS collet
- ✓ Air tight sealing of tubes
- ✓ Compatible with both Nylon & PU pipes
- ✓ Male Taper threads with PTFE coating
- ✓ Durable & Maintenance free
- ✓ Robust collet design lets the fitment & function remains unaffected even due to vibration.
- ✓ Simple & fast connection of tube just by plugging-in manually and similarly smooth way of pulling-out just by the press of plastic collet cap.

Application

One-touch fitting can be effectively used in all compressed air applications
Some of the pneumatic application include

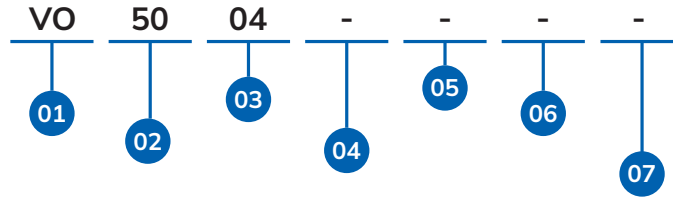
- ✓ Pneumatic cylinders (all types)
- ✓ All compressed air lines, machinery of all kinds wherever pneumatic systems are used
- ✓ Directional control valves(DCV), solenoid valves(SOV) and other valves
- ✓ Pneumatic control & circuit panels
- ✓ Air preparation units like filter, regulator and lubricators(FRL)

Plug



Model No.	Applicable Fitting size ØD	ØD1	L	A
VO-5004	4	10	42	15
VO-5006	6	12	44	16
VO-5008	8	14	46	17
VO-5010	10	16	48	20
VO-5012	12	18	52	21
VO-5014	14	20	45	22
VO-5016	16	18	47	23

VO - SERIES ONE TOUCH FITTINGS MODEL IDENTIFICATION CHART



01	SERIES
-	VO

04	APPLICABLE TUBING OD
-	BLANK
04	TO Ø04MM
06	TO Ø06MM
08	TO Ø08MM
10	TO Ø10MM
12	TO Ø12MM
14	TO Ø14MM
16	TO Ø16MM

05	APPLICABLE TUBING OD
-	BLANK
04	TO Ø04MM
06	TO Ø06MM
08	TO Ø08MM
10	TO Ø10MM
12	TO Ø12MM
14	TO Ø14MM
16	TO Ø16MM

02	PRODUCT TYPE	
21	Straight Union	38 Male Run Tee
22	Different Dia. Straight Union	39 Female Run Tee
23	Union Elbow	40 Male Branch 'Y'
24	Union Elbow Reducer	41 Male Connector (Internal Hexagon Socket)
25	Union Tee	42 Single Swivel (Internal Hexagon Socket)
26	Union Tee Reducer	43 Single Swivel (Slotted Head)
27	Union 'Y'	44 Single Swivel (Hexagon Head)
28	Union 'Y' Reducer	45 Double Swivel
29	Bulk Head Union	46 Triple Swivel
30	Male Connector	47 Multi Distributor Union
31	Bulk Head Female Connector	48 Multi Distributor Male
32	Female Connector	49 Cross Union
33	Male Elbow	50 Plug
34	Extended Male Elbow	53 Self Sealing
35	Female Elbow	54 Male Straight
36	Male Branch Tee	56 Double Branch Male Elbow
37	Female Branch Tee	

06	THREAD	
-	BLANK	K 1" BSP
A	M5X0.8	L 1/8" NPT
B	1/8" BSPT	M 1/4" NPT
C	1/4" BSPT	N 3/8" NPT
D	3/8" BSPT	O 1/2" NPT
E	1/2" BSPT	P 1/2" BSW (8 ANI)
F	1/8" BSP	Q 3/4" NPT
G	1/4" BSP	S M6X1
I	3/8" BSP	T M12X1.5
J	1/2" BSP	U 3/4" BSPT

03	APPLICABLE TUBING OD
04	With Applicable Tubing Od Ø04mm
06	With Applicable Tubing Od Ø06mm
08	With Applicable Tubing Od Ø08mm
10	With Applicable Tubing Od Ø10mm
12	With Applicable Tubing Od Ø12mm
14	With Applicable Tubing Od Ø14mm
16	With Applicable Tubing Od Ø16mm

07	CONFIGURATION
-	REGULAR
C1	CONFIG 1
C2	CONFIG 2
C3	CONFIG 3
⋮	⋮
C9	CONFIG 9
CA	CONFIG 10
CB	CONFIG 11

08	VERSION
-	VERSION 0
V1	VERSION 1
V2	VERSION 2
V3	VERSION 3
⋮	⋮
V9	VERSION 9
VA	VERSION 10
VB	VERSION 11

Global Presence...



Made In India



CONTACT US:

For Domestic Inquiry

✉ sales@uflowvalve.com 📞 +91 85110 98822 🌐 www.uflowvalve.com

For Export Inquiry

✉ export@uflowvalve.com 📞 +91 99744 77370 📞 +91 78018 09550

📍 Uflow Automation, Ankur Industrial Complex, Survey No: 275/276, Plot No: 31, Nr. Intol Cast Pvt. Ltd. Shapar(Veraval) Dist.: Gujarat (India) - 360 024.