

**3/2 SINGLE AND DUAL PRESSURE  
 BLOW SOLENOID POPPET VALVE  
 (NORMALLY CLOSE)**

Automation  
 Simplified...



- Solenoid Valve
- Angle Seat Valve
- Rotary Coupling
- Pneumatic Directional Control Valve
- Actuator
- Cylinder
- One Touch Fitting
- Ball Valve
- Butterfly Valve

Country of Origin - INDIA





**Valve Specifications**

Type :	3/2
Design :	External Pilot Operated, Poppet Type
Port Size :	G 1/2" BSP Female
Media :	Compressed Air (Filtered & Lubricated)
Seals:	Nitrile Rubber
Orifice:	13mm
Temperature Range:	5°C to 50°C
Mainline Pressure Range:	3 to 20 bar
External Pilot Pressure Range:	5 to 9 bar
Flow (NLPM) at 5 bar	3600 Normal Litres Per Min.
Coil Voltage:	AC: 24V, 110V, 230V   DC: 12V, 24V, 36V, 48V, 110V
Power:	AC: 6W   DC: 6W
Duty Cycle:	Continuous
Response Time:	15 msec ON / 25 msec OFF
Protection:	IP65
Other Specification Data:	Available on Request

**Port Connection**

1 - Input, 2 - Output, 3 - Exhaust, 8 - Pilot In

Model No.	Diagram No.	Symbol
CSA2BN40CW130V0	1.1	
CVA2BN40CW130V0	1.2	

**3/2 High Pressure Blow Solenoid Poppet Valve**

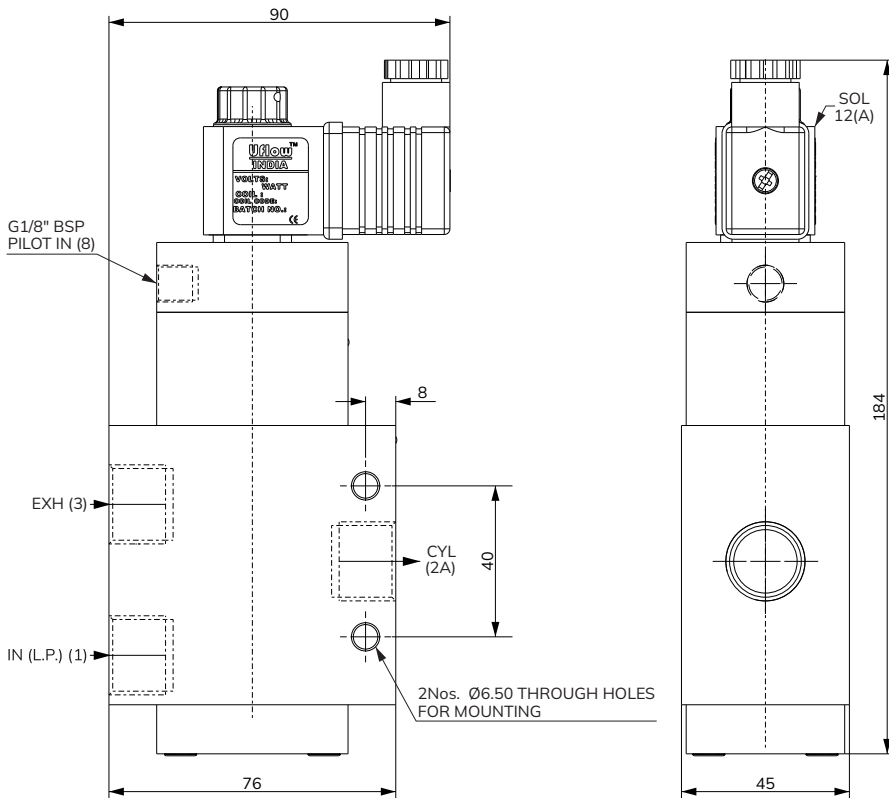


Diagram No. : 1.1



3/2 Dual Pressure Blow Solenoid Poppet Valve

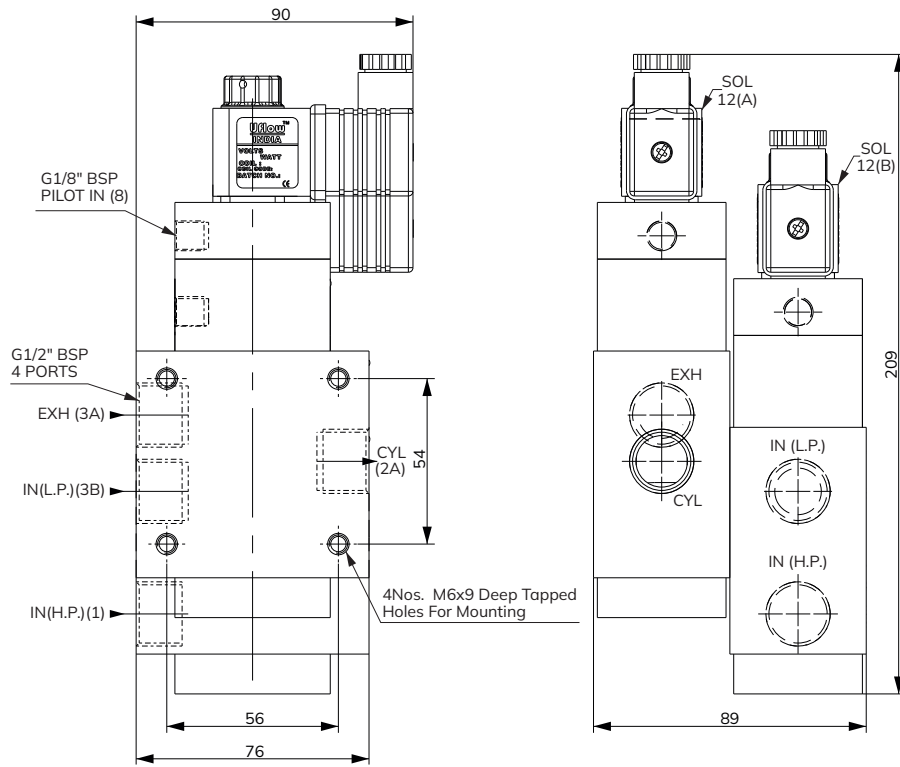


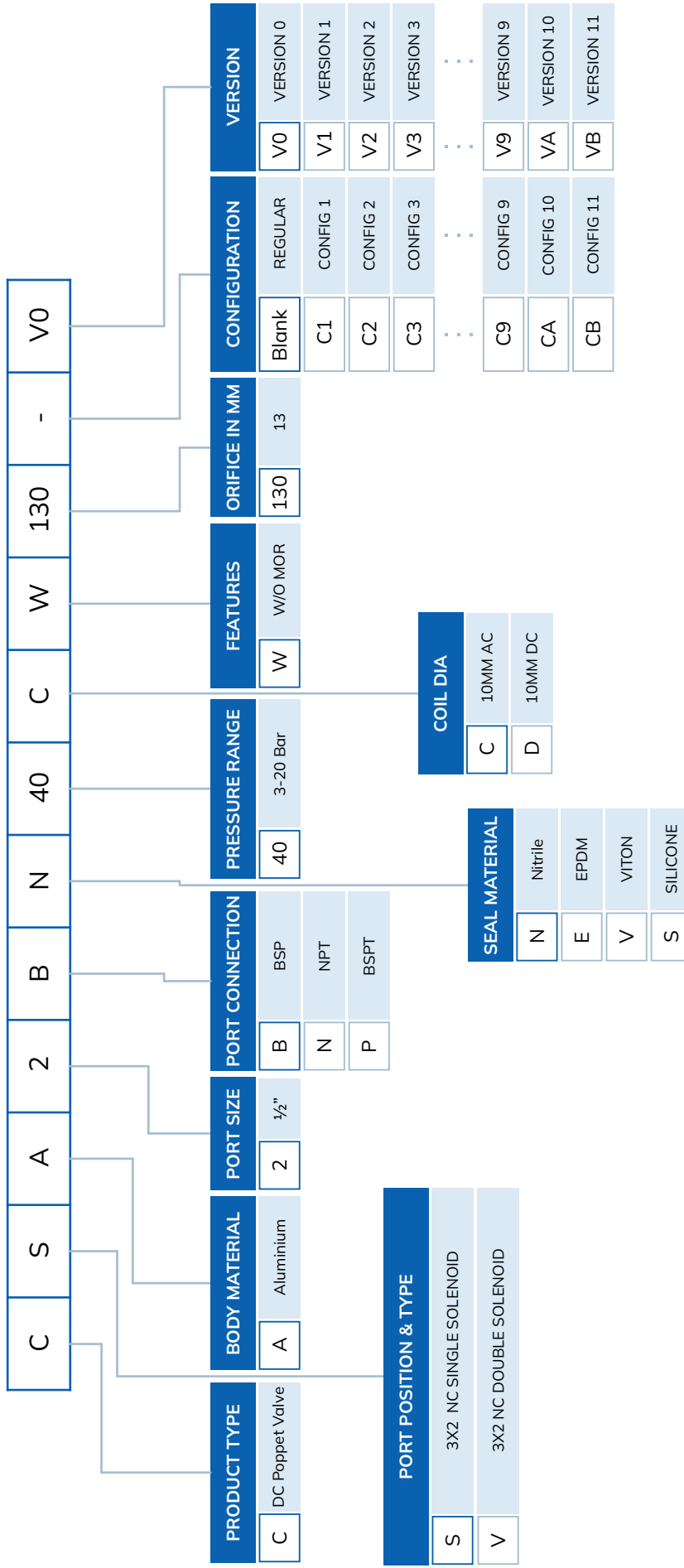
Diagram No. : 1.2



Sequence Of Operation

- SOL 12A 'ON' : Low Pressure (3B) is connected to outlet (Cyl 2A) (Low Pressure pre-blow)
- SOL 12A + SOL 12B 'ON' : High Pressure is connected to outlet (Cyl 2A) (High Pressure blow)
- Both SOL 'OFF' : Outlet (Cyl 2A) connected to Exh (3A) (Exhausting)

# DC SOLENOID POPPET TYPE VALVE MODEL IDENTIFICATION CHART



**CSA2BN40CW130V0**  
1/2" 3X2 NC SINGLE SOLENOID DC POPPET VALVE ALUMINIUM-BSP-NITRILE-3 TO 20 BAR-10MM AC-13MM ORIFICE

# Global Presence...



Made In India



## CONTACT US:

✉ [sales@uflowvalve.com](mailto:sales@uflowvalve.com) ☎ +91 851 109 8822 🌐 [www.uflowvalve.com](http://www.uflowvalve.com)

📍 Uflow Automation, Ankur Industrial Complex, Sur vey No: 275/276, Plot No: 31, Nr. Intol Cast Pvt. Ltd. Shapar( Veraval) Dist.: Gujarat (India) - 360 024.