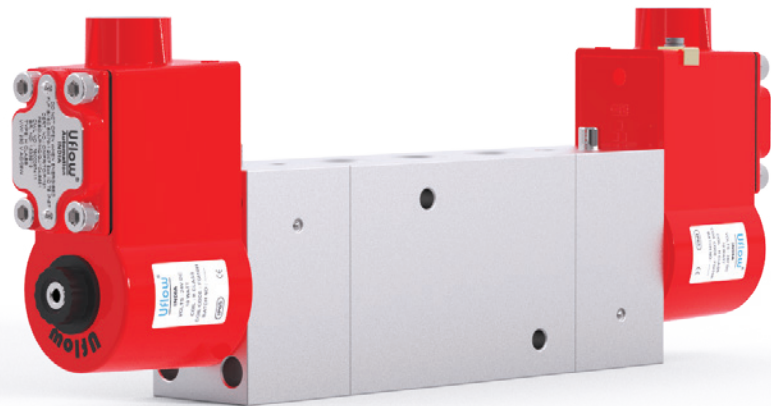


**5/2 DOUBLE SOLENOID
HYBRID POPPET VALVE
(NORMALLY CLOSE)**

Automation
Simplified...



Solenoid Valve

Angle Seat Valve

Rotary Coupling

Pneumatic Directional Control Valve

Actuator

Cylinder

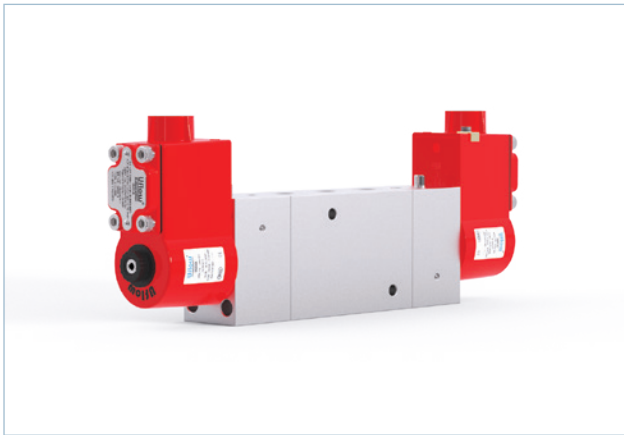
One Touch Fitting

Ball Valve

Butterfly Valve

Country of Origin - INDIA





Valve Specifications

Type :	5x2
Design :	Internal Pilot Operated Poppet Valve
Port Size :	In / Out / Exhaust - ½" BSP (Available in NPT)
Media :	Compressed Air (Filtered & Lubricated)
working Pressure Range :	2-10 Bar
Orifice :	12 mm
Flow Factor :	50 kv (LPM of Water @ 1 bar ΔP)
Ambient / Media Temperature :	5°C - 60°C
Materials of Construction :	SS316, Nitrile, Polymer

Coil Specification

Operating Voltage :	24V AC	110V AC	230V AC	24V DC
Power Consumption :	9W	9W	9W	11W
Coil Features :	High Reliability Unaffected by Voltage Surges. Easy coil changes coil lockable in 4X90 position or freely movable in between as require.			
Coil Housing :	IP67 Flameproof Junction box			

Port Connection

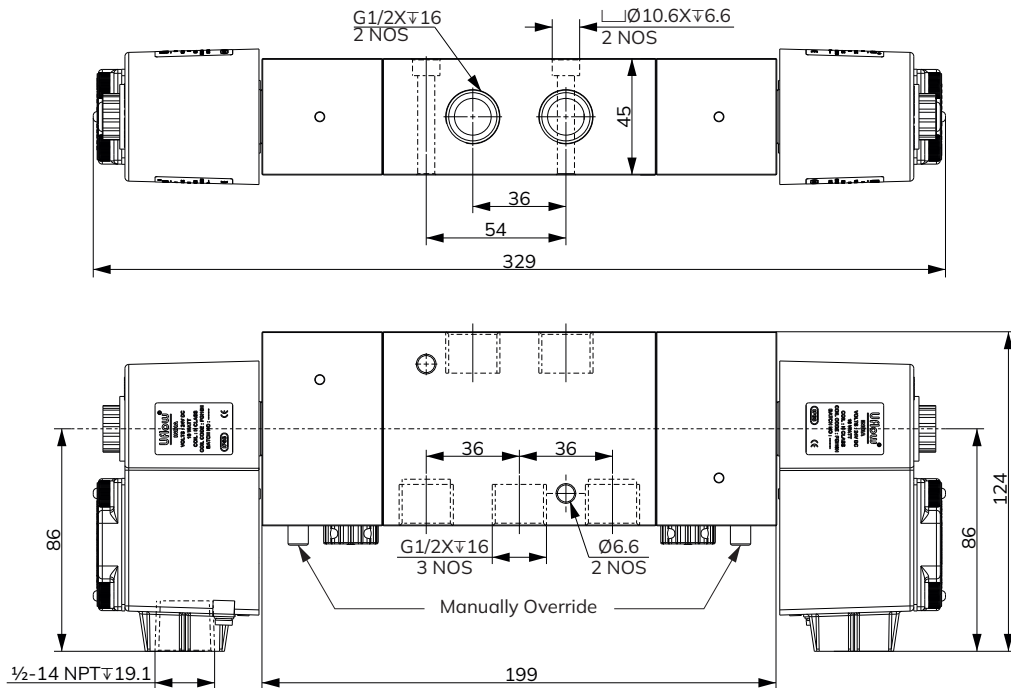
1 - Input, 2/4 - Output, 3/5 - Exhaust

Valve Model No.	Coil Type	Function	Symbol
HD62BN23GP120V0	AC	Double Solenoid	
HD62BN23HP120V0	DC		

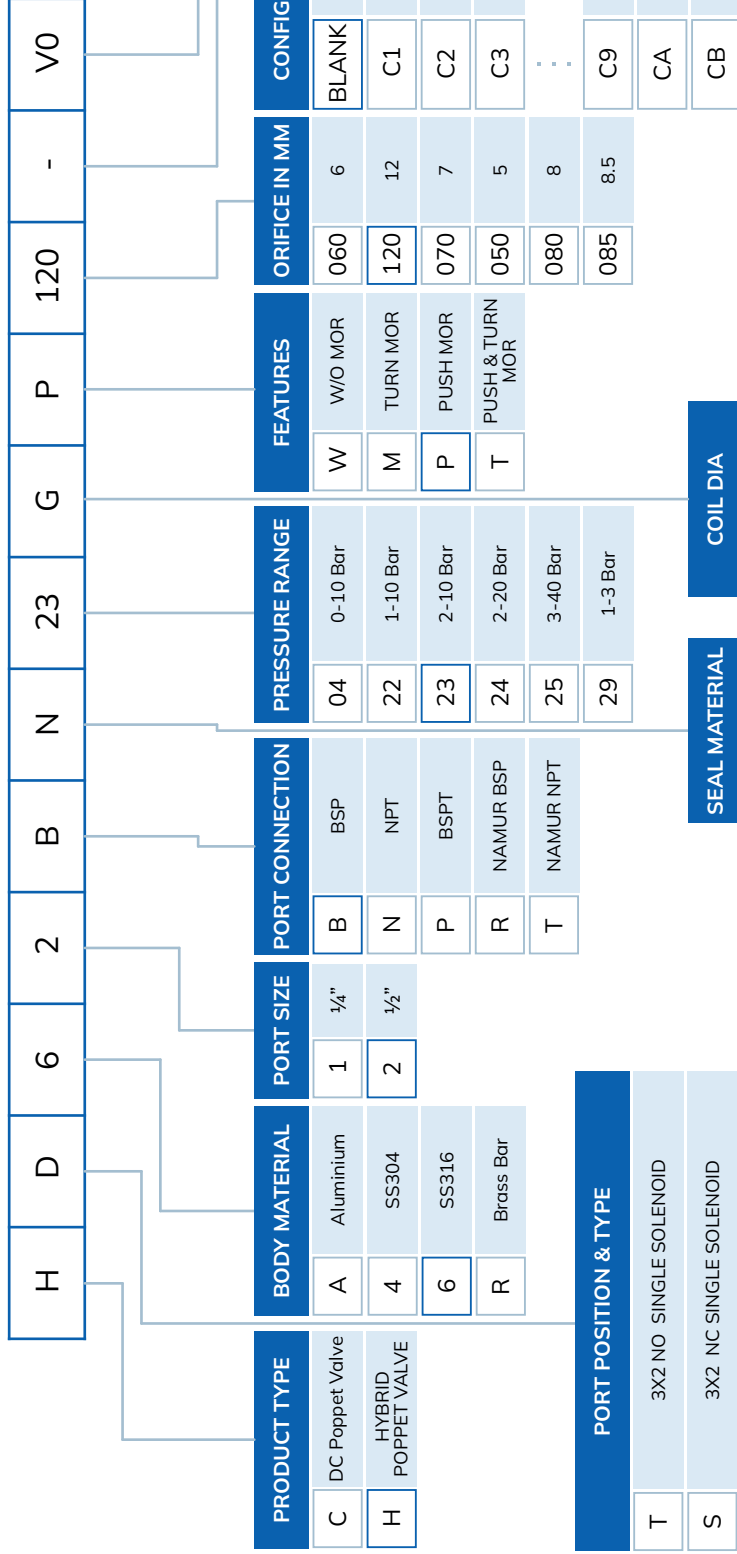
Features

- Fast response time 1000 cycle/min
- Manual override
- 20 Million cycle tested
- Lubrication not essential
- Suitable for high speed cycling
- Life > 20 Million Cycle

Dimension Drawing (All dimensions in mm)



DC SOLENOID POPPET TYPE VALVE MODEL IDENTIFICATION CHART



PORT POSITION & TYPE	SEAL MATERIAL	COIL DIA
T 3X2 NO SINGLE SOLENOID	N Nitrile	E 14MM AC
S 3X2 NC SINGLE SOLENOID	V VITON	F 14MM DC
F 5X2 SINGLE SOLENOID	S SILICONE	G 14MM FLP AC
D 5X2 DOUBLE SOLENOID	C FLUORO SILICONE	H 14MM FLP DC
B 5X3 CENTER BLOCKED		I 18MM AC
E 5X3 CENTER EXHAUSTED		J 18MM DC
P 5X3 CENTER PRESSURISED		V 18MM FLP AC
A 4X2 SINGLE SOLENOID		W 18MM FLP DC
U 4X2 DOUBLE SOLENOID		
C 3X2 & 5X2 SINGLE SOLENOID CONVERTIBLE		
V 3X2 NC DOUBLE SOLENOID		

1/2" 5X2 DOUBLE SOLENOID DC HYBRID POPPET VALVE SS316-BSP-NITRILE-2 TO 10 Bar-14MM FLP AC-PUSH MOR-12MM ORIFICE
HD62BN23GP120V0

Global Presence...



Made In India



CONTACT US:

✉ sales@uflowvalve.com ☎ +91 851 109 8822 🌐 www.uflowvalve.com

📍 Uflow Automation, Ankur Industrial Complex, Sur vey No: 275/276, Plot No: 31, Nr. Intol Cast Pvt. Ltd. Shapar(Veraval) Dist.: Gujarat (India) - 360 024.